



CALA





With stunning Pentland Hill views in a prime tree-lined setting to the North of Penicuik, these high spec spacious 4 and 5 bedroom homes, less than 9 miles from Edinburgh City Centre, offer the perfect retreat, with all the style you could want included. Visit our two stunning showhomes available to view daily by appointment.

### An outdoor retreat, with convenience and style...

If you are searching for your dream home surrounded by nature yet with everything you need still close at hand, then look no further than Belwood Oaks - our 4 & 5 bedroom houses have everything you need and a little bit more.

- Set to the treelined North of Penicuik
- Plentiful cycle routes, dog walks and open spaces
- Plentiful outdoor activities and family attractions nearby
- Everyday conveniences in walking distance in Penicuik
- Quick access to Straiton Retail Park, the bypass and Edinburgh

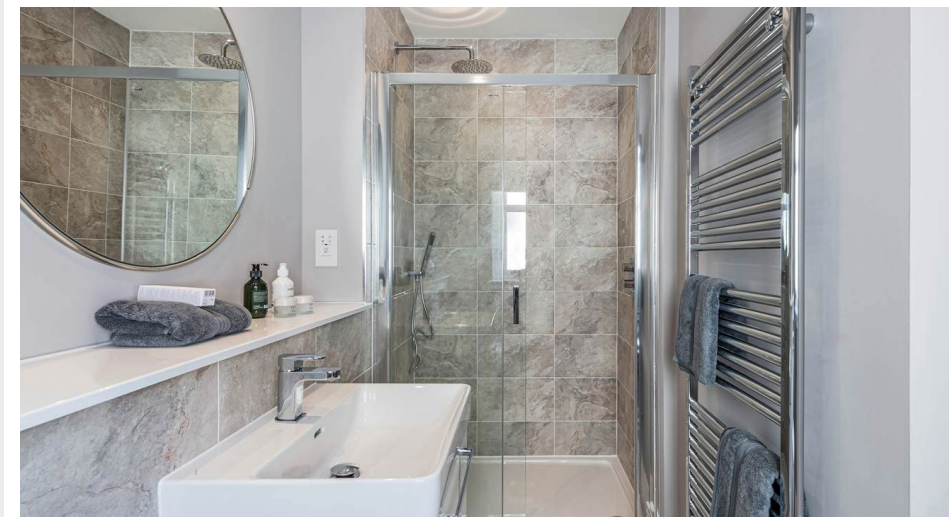
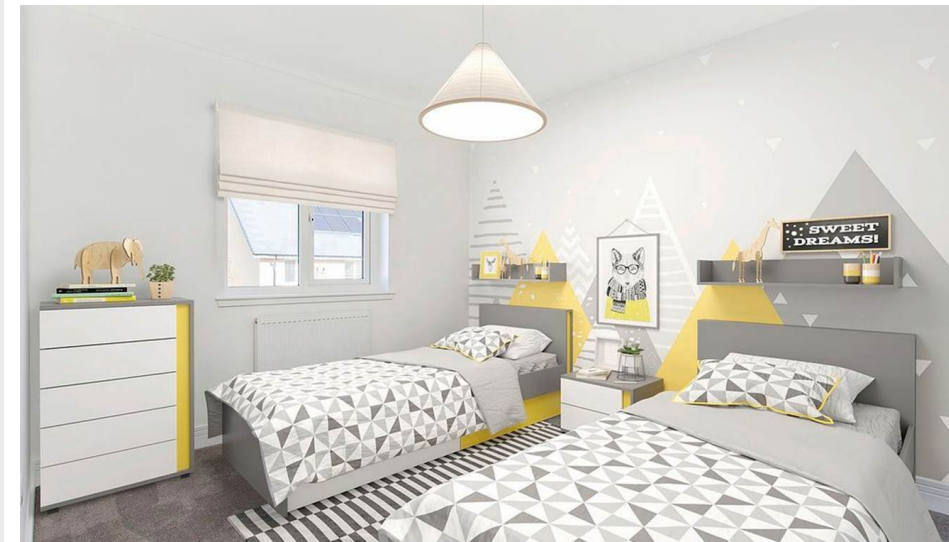
### Welcome home to Belwood Oaks

This spacious 4 bedroom detached home with a study features:

- A large rear garden and patio overlooking green space
- An open plan kitchen/family/dining area with integrated appliances
- A spacious light-filled lounge - perfect for entertaining
- 4 generous bedrooms all with fitted wardrobes
- En-suites to bedrooms 1 and 2
- A separate study - your own home office
- Excellent storage throughout
- A utility room and integrated single garage

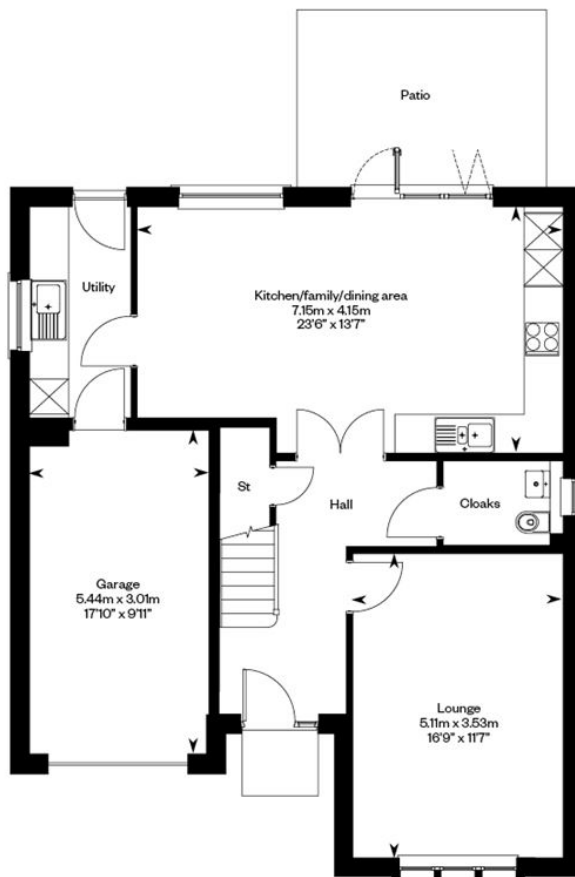
### Take a virtual tour

<https://my.matterport.com/show/?m=o4VNAWfMsf8&wts=3&ts=1.5>

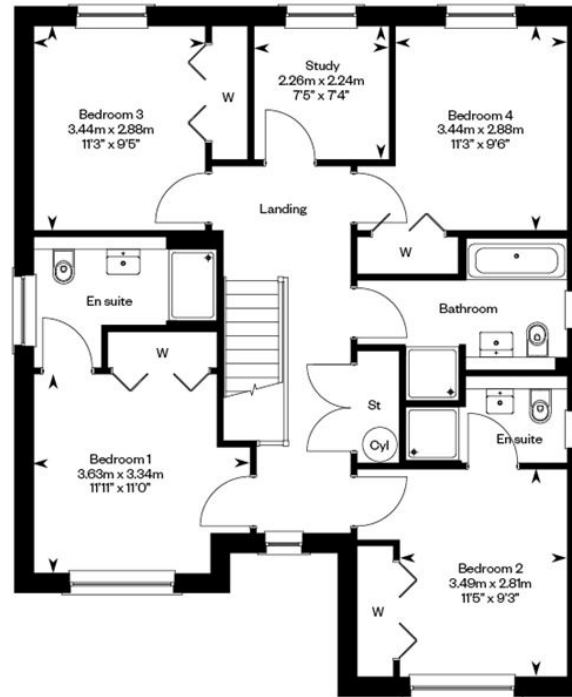




## GROUND FLOOR



## FIRST FLOOR



**GILSONGRAY**

LAW • PROPERTY • FINANCE

GILSONGRAY.CO.UK

### EDINBURGH

29 Rutland Square  
EH1 2BW  
0131 516 5366

...

### GLASGOW

160 West George Street  
G2 2HQ  
0141 530 2021

...

### EAST LoTHIAN

33 Westgate  
EH39 4AG  
01620 893 481

...

### DUNDEE

11 South Tay Street  
DD1 1NU  
01382 201 000

...

### BORDERS

01890 880 008



@gilsongrayprop



gilson gray property



gilson gray property



@gilsongrayprop



CHARTERED FIRM

rightmove

Zopla.co.uk

OnTheMarket

These particulars were prepared on the basis of our own knowledge of the local area and, in respect of the property itself, information supplied to us by our clients; all reasonable steps were taken at the time of preparing these particulars to ensure that all details contained in them were accurate. All statements contained in the particulars are for information only and all parties should not rely upon them as statements or representations of fact. In particular, (a) descriptions, measurements and dimensions, which may be quoted in these particulars are approximate only and (b) all references to conditions, planning permission, services, usage, constructions, fixtures and fittings and movable items contained in the property are for guidance only. Our clients may instruct us to set a closing date for offers at short notice and therefore if you wish to pursue interest in this property, you should immediately instruct your solicitor to note interest with us. Our clients reserve the right to conclude a bargain for the sale of the above subjects or any part thereof ahead of a notified closing date and will not be obliged to accept either the highest or indeed any offer for the above subjects or any part thereof. All measurements have been taken using a sonic tape and cannot be regarded as guaranteed given the limitations of the device. Services and/or appliances referred to in these particulars have not been tested and no warranty is given that they are in full working order.