







## WELCOME HOME TO MANSEFIELD LEA

Set on the edge of East Calder as the village runs into open countryside, and just a short walk from the centre, schools and shops, Mansefield Lea is ideal for anyone looking to savour the great outdoors.

Overall Size - 1,961 sq. ft.

Designed for spacious and flexible family living, the Darroch features an open plan kitchen and family/dining room with bi-fold doors opening out to the patio and garden, whilst the formal lounge to the front of the home is ideal for entertaining. With four double bedrooms, two en suites and a fifth bedroom, which can also be used as a study, The Darroch is the perfect home for families in need of a wealth of space.

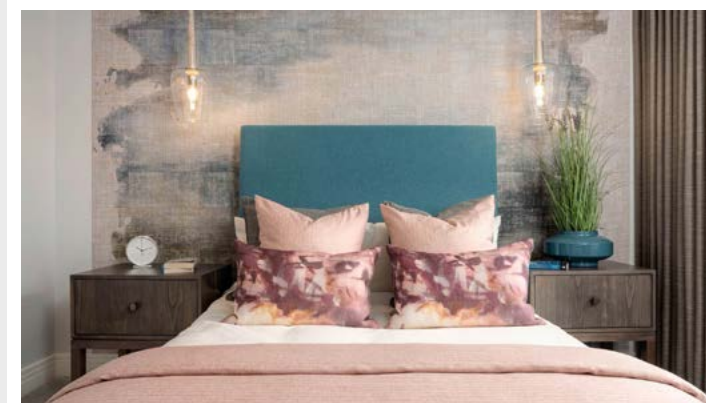


### The Darroch

This impressive 5 bedroom detached family home features::

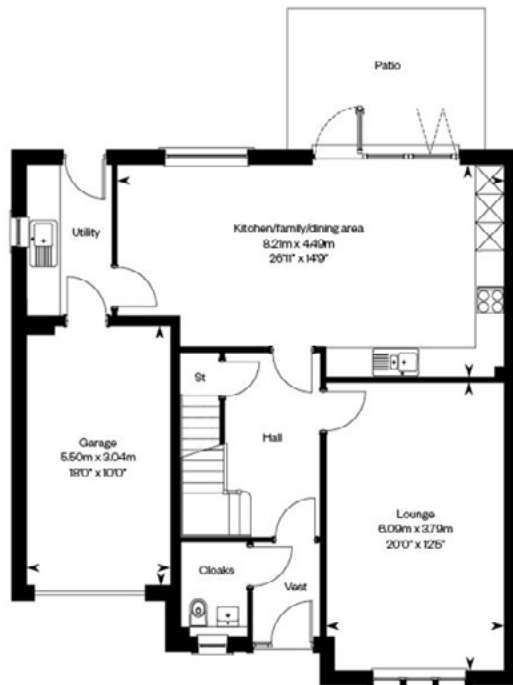
- Bi-fold doors leading to a spacious rear garden and patio area
- An open plan kitchen/family/dining area with integrated appliances
- A separate formal lounge to the front of the home
- Fitted wardrobes and an en suite to bedrooms 1 and 2
- Fitted wardrobes to bedrooms 3 and 4
- A flexible fifth bedroom - perfect as a home office
- A utility room plus an integrated garage
- Overall size of 1,961 Sq. Ft.
- PEA Rating: A

[CLICK HERE for a Virtual Tour](#)

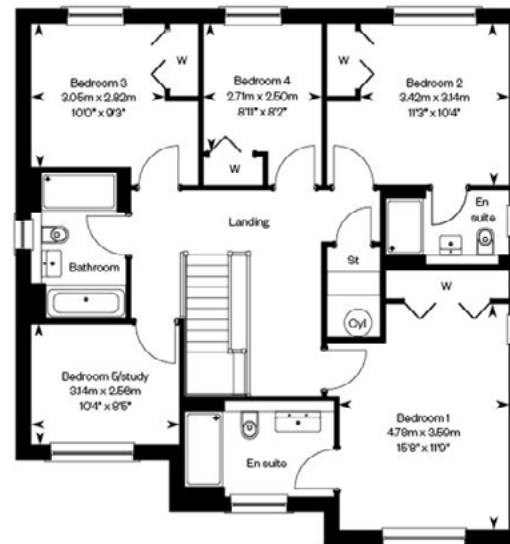




## GROUND FLOOR



## FIRST FLOOR



**GILSONGRAY**

LAW • PROPERTY • FINANCE

GILSONGRAY.CO.UK

### EDINBURGH

29 Rutland Square  
EH1 2BW  
0131 516 5366

...

### GLASGOW

160 West George Street  
G2 2HQ  
0141 530 2021

...

### EAST LoTHIAN

33 Westgate  
EH39 4AG  
01620 893 481

...

### DUNDEE

11 South Tay Street  
DD1 1NU  
01382 201 000

...

### BORDERS

01890 880 008



@gilsongrayprop



gilson gray property



gilson gray property



@gilsongrayprop



CHARTERED FIRM

rightmove

Zoopa.co.uk

onTheMarket

These particulars were prepared on the basis of our own knowledge of the local area and, in respect of the property itself, information supplied to us by our clients; all reasonable steps were taken at the time of preparing these particulars to ensure that all details contained in them were accurate. All statements contained in the particulars are for information only and all parties should not rely upon them as statements or representations of fact. In particular, (a) descriptions, measurements and dimensions, which may be quoted in these particulars are approximate only and (b) all references to conditions, planning permission, services, usage, constructions, fixtures and fittings and movable items contained in the property are for guidance only. Our clients may instruct us to set a closing date for offers at short notice and therefore if you wish to pursue interest in this property, you should immediately instruct your solicitor to note interest with us. Our clients reserve the right to conclude a bargain for the sale of the above subjects or any part thereof ahead of a notified closing date and will not be obliged to accept either the highest or indeed any offer for the above subjects or any part thereof. All measurements have been taken using a sonic tape and cannot be regarded as guaranteed given the limitations of the device. Services and/or appliances referred to in these particulars have not been tested and no warranty is given that they are in full working order.