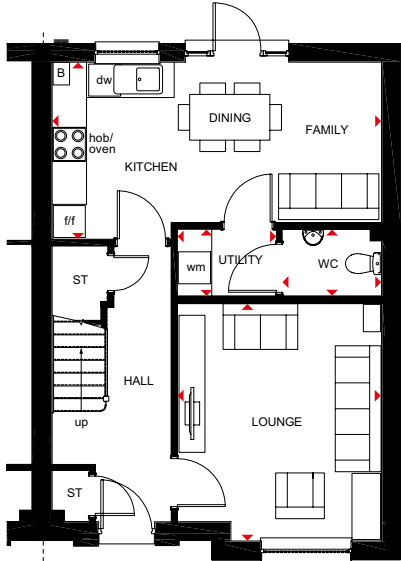


CRAIGEND

3 BEDROOM SEMI-DETACHED HOME



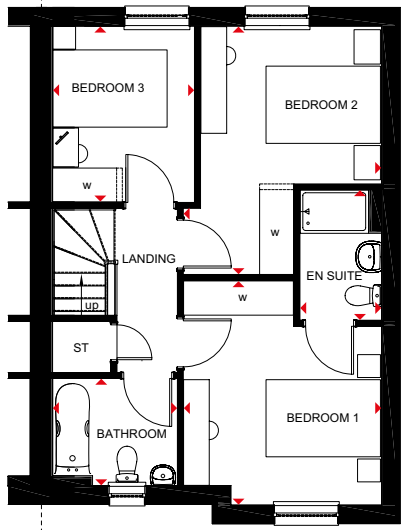
- Spacious open-plan kitchen with dining and family areas, and access to the rear garden and utility
- Bright, front-aspect lounge provides room for everyone to relax
- Plenty of storage space and a cloakroom complete the ground floor making this a practical family home
- Upstairs are three double bedrooms, the main with en suite, and a family bathroom



Ground Floor

Lounge	3565 x 4141mm	11'8" x 13'7"
Kitchen/ Family/Dining	5752 x 3082mm	18'10" x 10'1"
WC	1732 x 1161mm	5'8" x 3'10"
Utility	1728 x 1161mm	5'8" x 3'10"

[Approximate dimensions]



First Floor

Bedroom 1	3465 x 3923mm	11'4" x 12'10"
En Suite	1427 x 2280mm	4'8" x 7'6"
Bedroom 2	3465 x 4340mm	11'4" x 14'3"
Bedroom 3	2482 x 3114mm	8'2" x 10'3"
Bathroom	2182 x 1876mm	7'2" x 6'2"

[Approximate dimensions]

KEY	B	Boiler	f/f	Fridge/freezer space	◀▶	Dimension location
	ST	Store	dw	Dishwasher space		
	wm	Washing machine space	w	Wardrobe space		