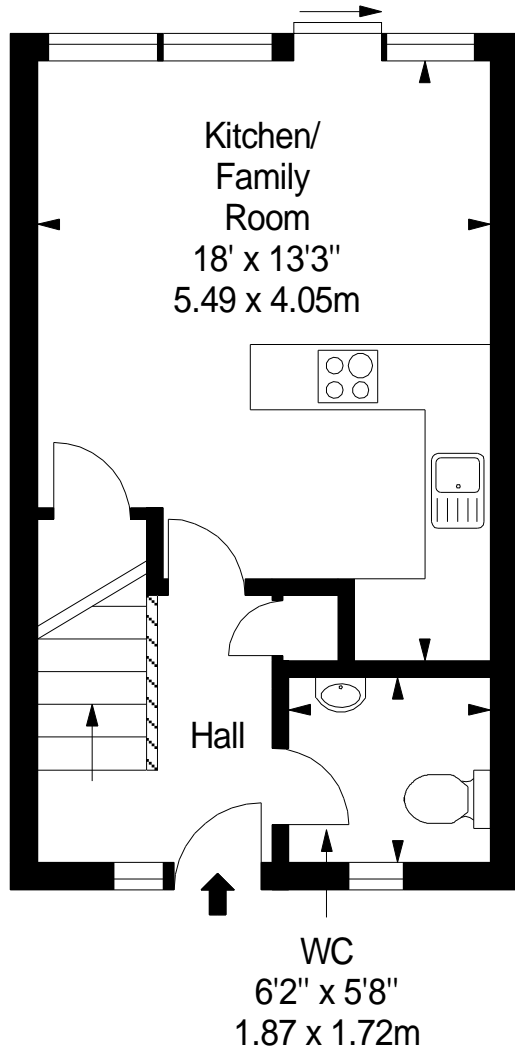


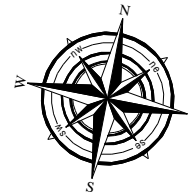
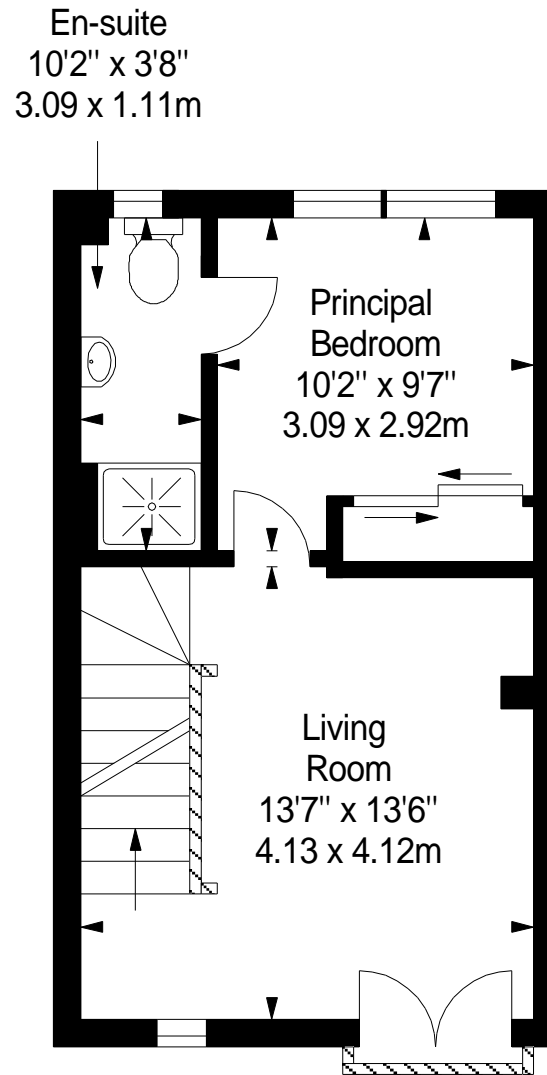
## Ground Floor

Approx. 30.5 sq. metres (328.3 sq. feet)



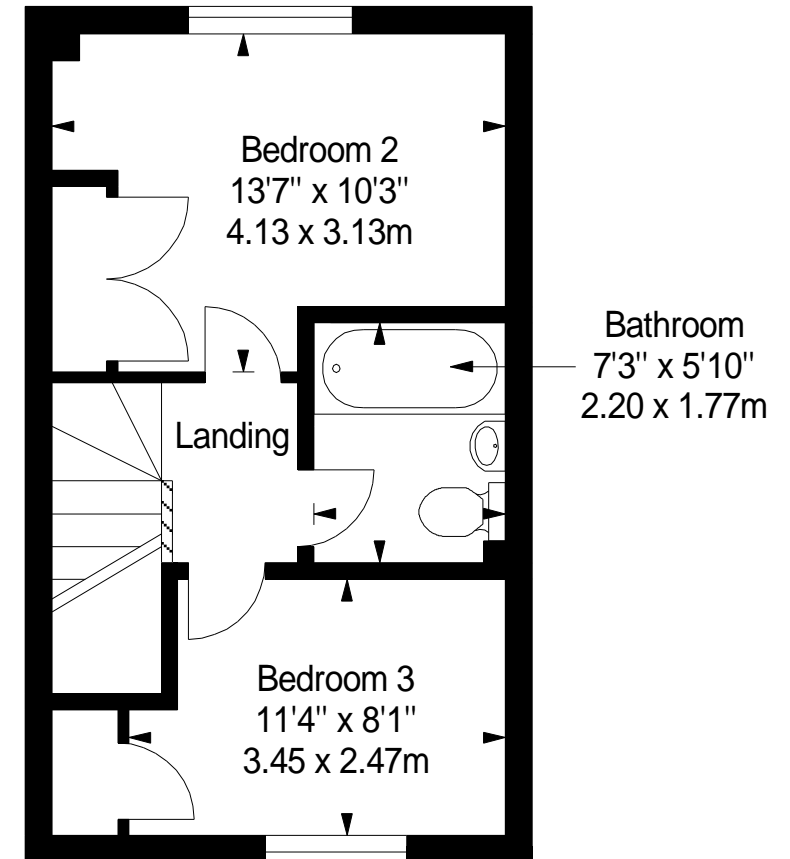
## First Floor

Approx. 30.5 sq. metres (328.3 sq. feet)



## Second Floor

Approx. 30.5 sq. metres (328.3 sq. feet)



Total area: approx. 91.5 sq. metres (984.9 sq. feet)