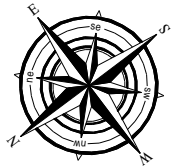
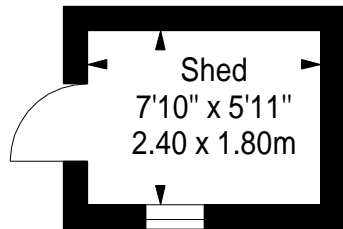


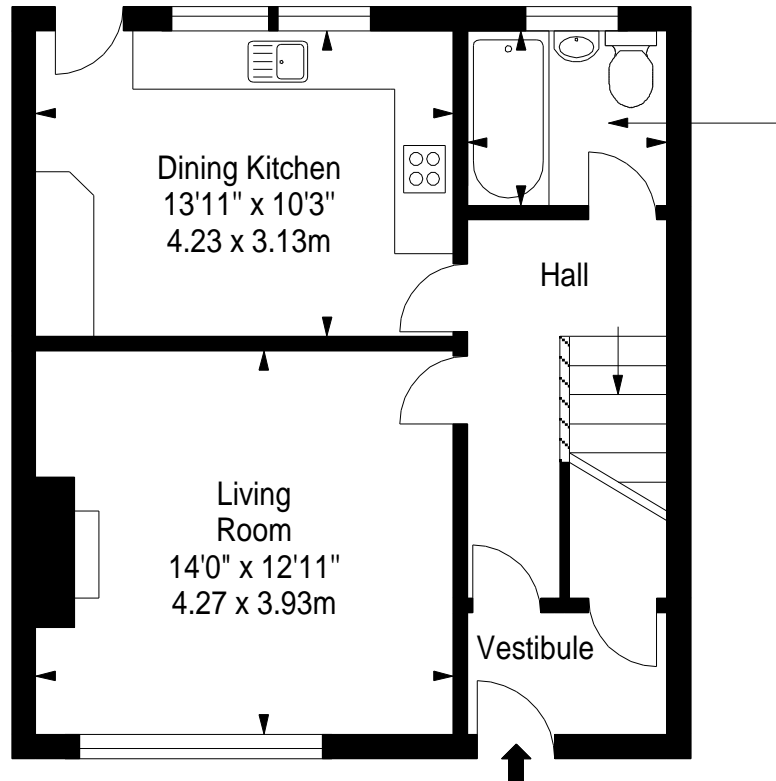
### Shed

Approx. 4.3 sq. metres (46.3 sq. feet)



### Ground Floor

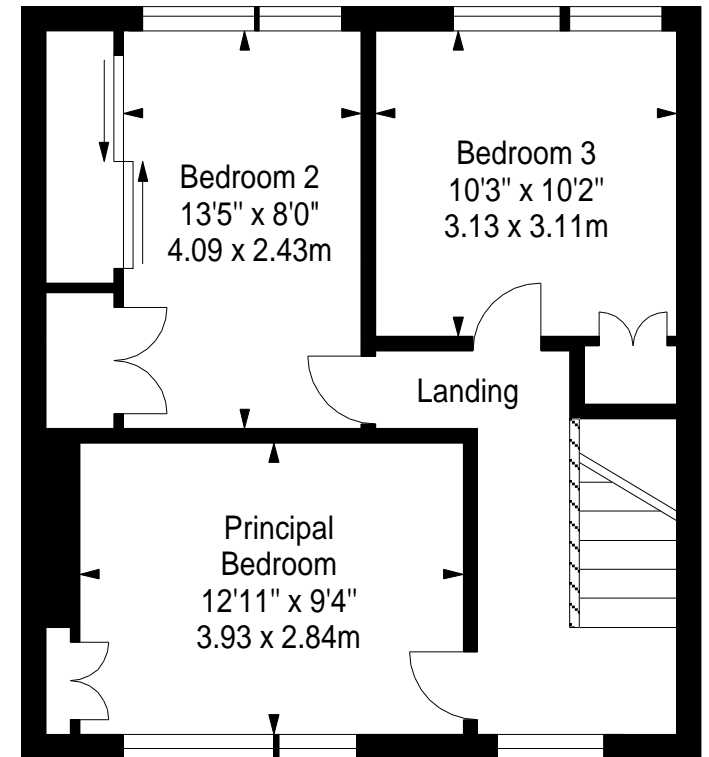
Approx. 47.1 sq. metres (507.0 sq. feet)



Bathroom  
6'9" x 5'11"  
2.05 x 1.81m

### First Floor

Approx. 47.1 sq. metres (507.0 sq. feet)



Total area: approx. 98.5 sq. metres (1060.3 sq. feet)